

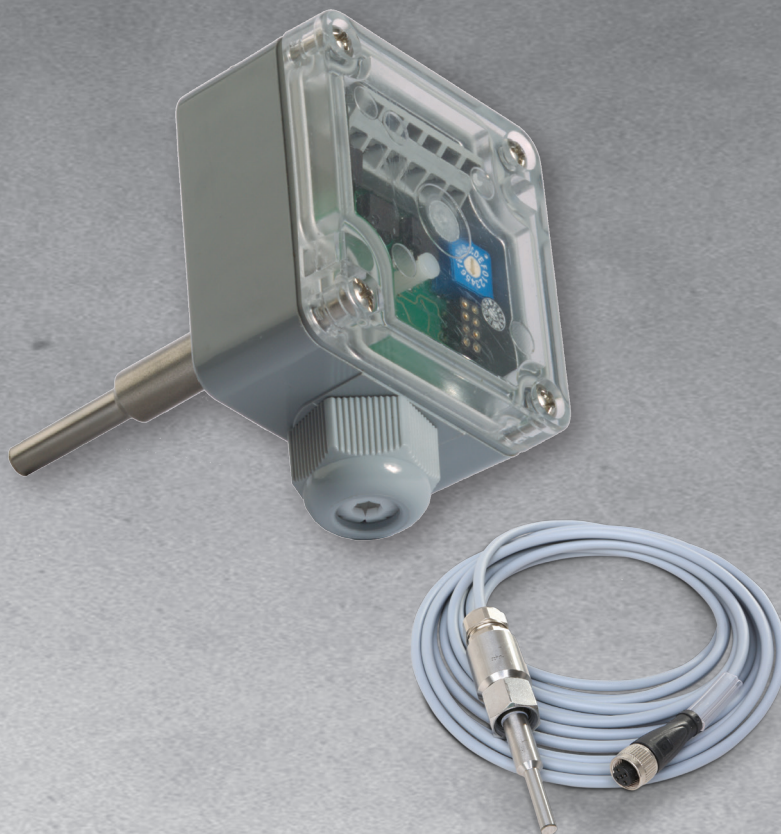
Calorimetric flow switch for liquids

The flow switch FS05 with a normally open contact pair is designed for monitoring of heat-conductive liquid media.

As soon as the flow drops below the user-defined limit (16-position status switch), the status output is changed. The operational status is displayed using 6 LEDs. The standard length of bar-type sensor is 65mm. Based on your order, the length can be modified to 125 mm.

The measurement cycle time ranges from 4 sec to 8 sec with the measurement range $4 \div 200$ cm/s.

One of the main advantages of the sensor is its easy installation and low purchase price thanks to its simple construction.



MAIN MERITS

- Quick and easy installation
- Simple operation
- 6x LED for operational status indication
- In-house adjustment of the normally open contact
- Possibility to change the switching logics using a 16-position BCD switch
- The flow switch design also for CLAMP connection
- Low purchase costs

Power	24 V \pm 10% DC with reverse polarity protection
Input power	1,5/4 VA
Electrical connection	by means of a terminal board (6 contacts)
Status contact	2 x SSR solid-state relay in potential-free / PNP / NPN wiring
Process connection	according to DIN2353 with a sleeve nut M16x1.5 through the cutting ring 24° into the straight threaded neck (G1/2"; G1/4"; M14 x 1,5; NPT1/4"); CLAMP: DN25 (Ø 50.5mm) or DN50 (Ø 64mm)
Construction	compact (detached upon agreement with the manufacturer)
Display	6 x status LED
Controls	2x button, BCD switch
Measurement time	typically 4 sec, max. 8 sec
Recommended range	$4 \div 200$ cm/s
Max. temperature of medium	80 °C
Max. pressure of medium	40 bar
Degree of protection	IP65

FluidTechnics
 Standerdmolen 3
 2964 HM Groot-Ammers
 Tel: (+31) 0184669328
 Netherlands
www.fluidtechnics.nl
info@fluidtechnics.nl



COMAC CAL