

Field Verificator User Manual



ENGLISH
TD 212-0-ENG



CE/EMC/Norme



The manual that describes this equipment conforms to the following safety rules:

- Directives EN 61326-1:2006, EN 55011:2009 + / A12010, EN 6100-3 (2/3), EN 6100-4 (2/3/4/5/6/8/11).
- Directive EN61010-1 (pending).

INDEX

1. DISCONNECTING THE FLOWMETER	4
2. CONNECT THE VERIFICATOR	4
3. USE OF THE MCE LINK PROGRAM	6
4. DISCONNECT THE VERIFICATOR	9

1. DISCONNECTING THE FLOWMETER

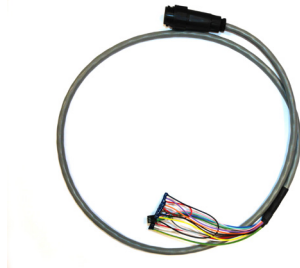
1.1 To connect the Verificator, it is necessary first of all to disconnect the flowmeter under test:

1. Switch off the converter under test;
2. Open back cover;
3. Disconnect the two cables of coils and electrodes;
4. Disconnect any cable connected to I/O outputs.

2. CONNECT THE VERIFICATOR

2.1 The System is provided with 3 different cables:

- 2 cables to be connected to the converter (CONVERTER I/O and CONVERTER SIGNAL) and 1 cable to be connected to the sensor for electrical tests of isolation and resistance. Here below photos and descriptions.

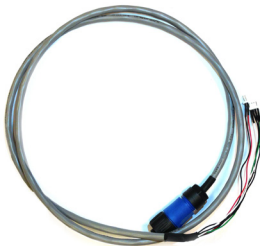


CONVERT I/O it is composed by two minor cables, upper and lower (refer to numeration indicated on the cables)



CONVERT SIGNAL it is composed by 2 fast connectors, 4 and 2 wires

- 1 cable to be connected to the sensor for electrical tests of isolation and resistance. Composed by two fast connectors



2.2 Connect the vericator to the power supply 100-240V 50/60 Hz, if not available, use the internal battery of the vericator turning ON the switch.(Note – in case it was planned to use the Vericator in battery mode, make sure the battery is fully recharged: Led light steady ON).

NOTE

IN CASE IT WAS PLANNED TO USE THE VERIFICATOR IN BATTERY MODE, MAKE SURE THE BATTERY IS FULLY RECHARGED: LED LIGHT STEADY ON



3. USE OF THE MCE LINK PROGRAM

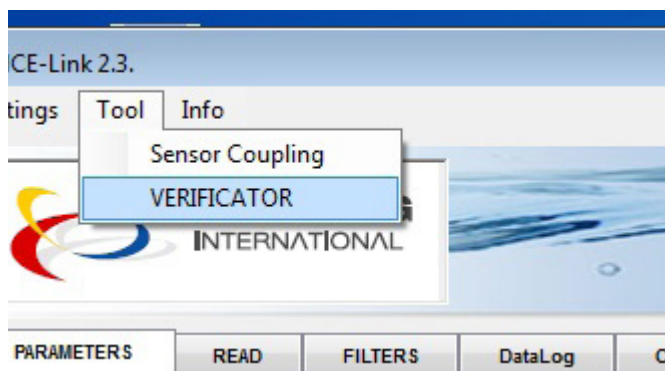
3.1. Power up the MC608 and wait for initialization

3.2 On the MCElink software, select the COM port connected to the converter and press the CONNECT button (same procedure indicated in the MC608 manual)

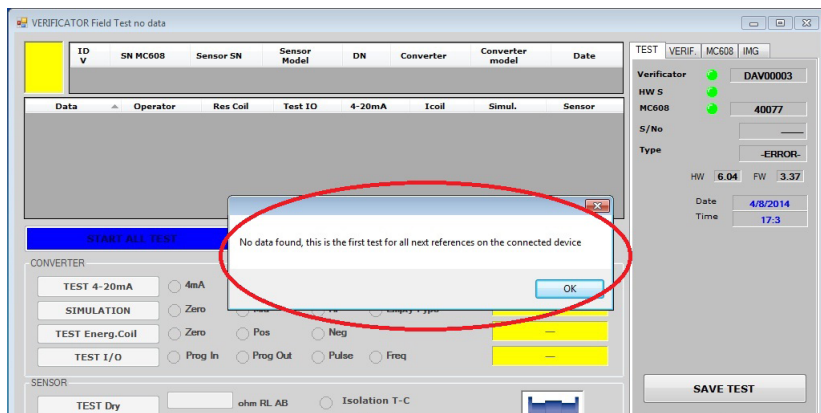
3.3 From the TOOL menu, select VERIFICATOR. Wait for boot sequence

NOTE

VERIFY THE FIRMWARE VERSION OF THE MC608
IS EQUAL OR HIGHER THAN 3.35.
IN CASE NECESSARY, UPDATE WITH THE LATEST VERSION AVAILABLE



3.3.1 In case the system will not find any data, a message will appear:



3.3.2 Press OK to proceed.

3.4 Click on NEW TEST, it will enable the button of the relative tests.

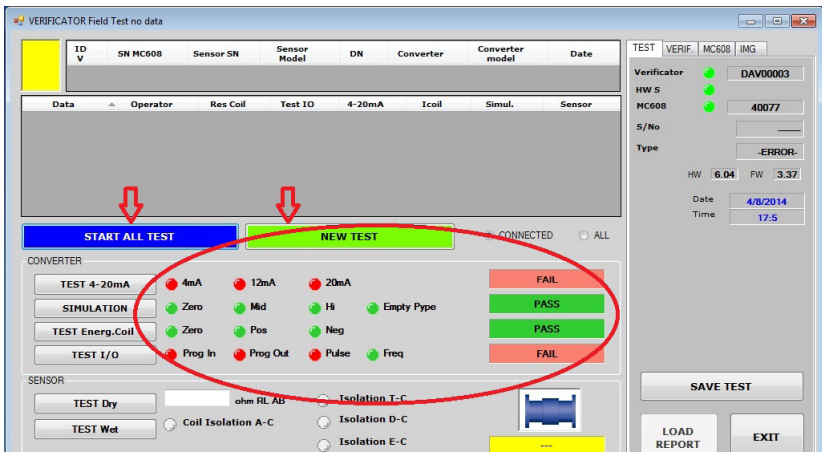
3.5 Proceed by pressing the Blue button START ALL TEST,

NOTE

IN CASE YOU WANT TO RUN INDIVIDUAL TEST,
PRESS ONLY THE SINGLE RELATED BUTTON

At the end of the test, the result will be displayed

- Positive: all Led will be green and the word PASS will be indicated over a green background
- Negative: Red Led and the word FAIL indicated under red background



SENSOR TEST

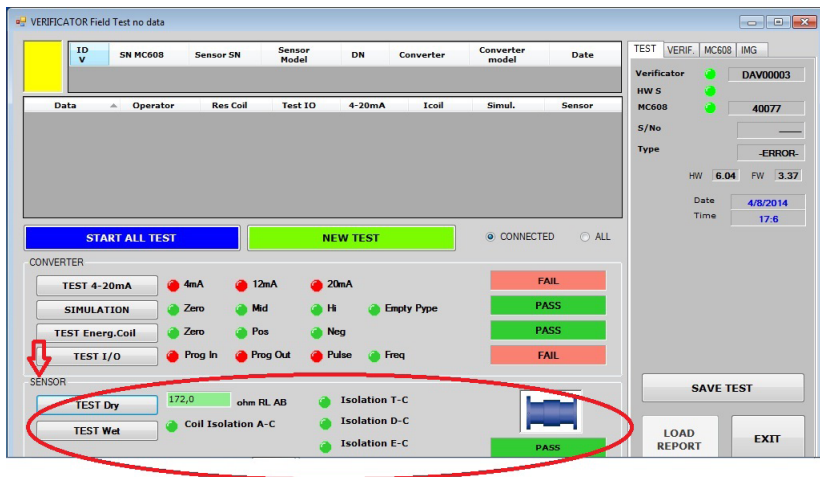
The sensor test verifies the good status of the sensor, several checks are performed to the electrical connections.

IMPORTANT NOTE!

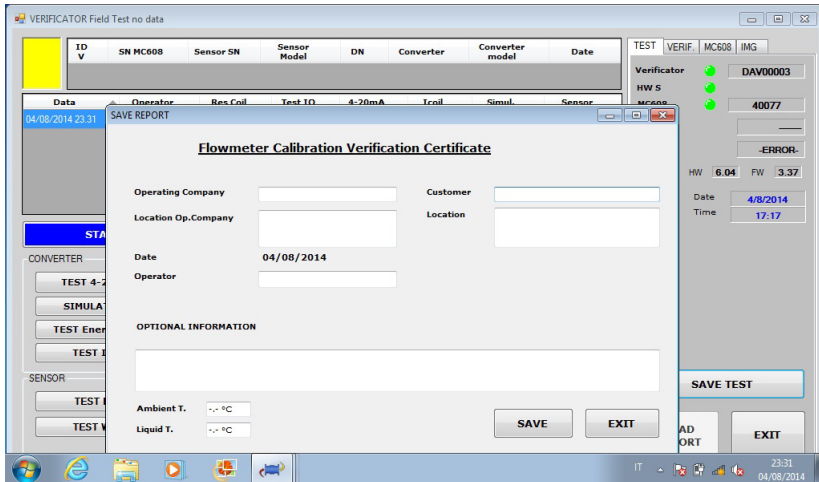
IT IS GIVEN THE POSSIBILITY TO PERFORM TWO DIFFERENT TESTS
BASED ON THE CONDITIONS OF THE SENSOR DRY TEST TO BE PERFORMED
WITH THE INTERNAL PART OF THE SENSOR PERFECTLY DRY
WET TEST TO BE PERFORMED WHEN IT IS NOT ASSURED THE INTERNAL PART
OF THE SENSOR IS PERFECTLY DRY,
AND THERE MAY BE HUMIDITY OR LIQUID INSIDE.

The ohm value of the resistance of the coils, will appear in the white box

The following tests will verify the perfect isolation of electrodes and coils with earth reference.



3.6 Press EXIT button. The program will automatically exit from test mode, return to main software page and will disconnect the unit from the converter.

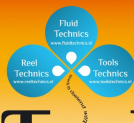


4. DISCONNECT THE VERIFICATOR AND RESTORE THE NORMAL USE OF THE FLOWMETER

- 4.1 Disconnect the power supply from the converter MC608.
- 4.2 Disconnect all the cables from the filed vericator.
- 4.3 Restore all previous connections, including I/O if any.
- 4.4 Close the back cover of the 608 and put it in operation.



0184669328



FluidTechnics
sterk in vloeidend werk

ENGLISH
TD 212-0-ENG